



SFS

Self-tapping fastener **TDBL**

Easy, fast and secure connection
of static loaded metal components

Easy and fast

Blind fastening

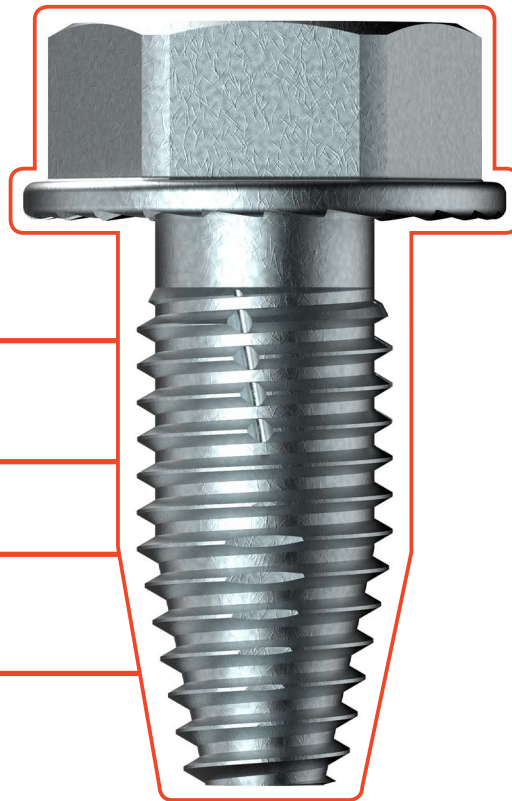
Assembly from one side

Removable

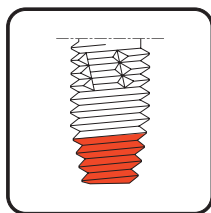
Scroll chuck

using gimlet point tip

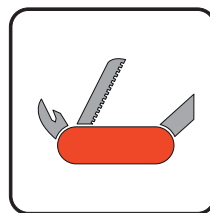
Patent-registered



Won't unwind



Self-tapping



User friendly



Approval

It's time for a change of system to **TDBL**

A more efficient and secure direct screw connection for supporting structures subject to static load.

Time-consuming method

Without the TDBL, connecting pre-drilled supports is time-consuming, requiring the use of standard bolts, washers and nuts.



New, simple direct connection

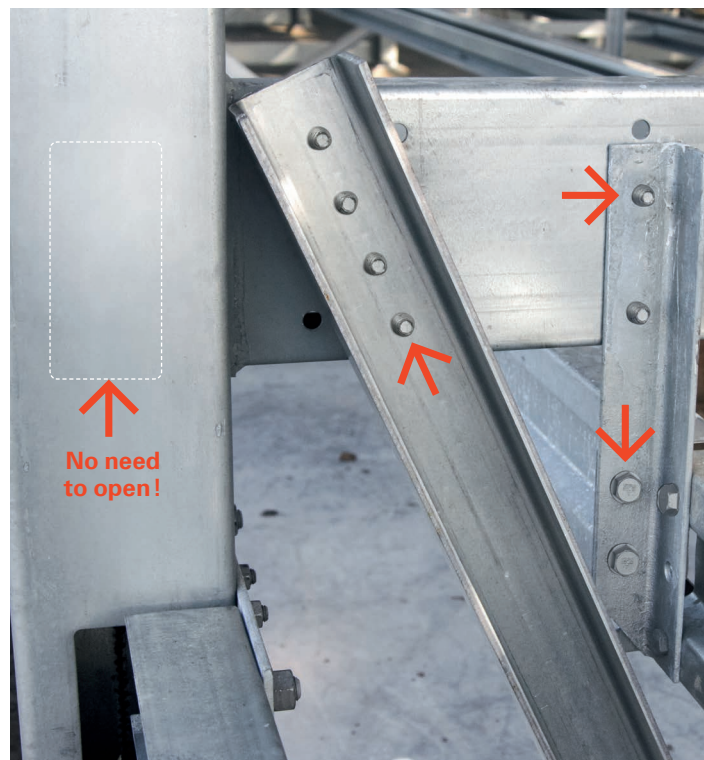
The self threading fastener, TDBL is inserted into the punched hole and effortlessly driven in using a cordless impact driver.



Using the traditional nut, bolt and washer method, the connection must be accessible from both sides. This can not only be time consuming and involve extra cutting, but requires enhancements in the column design to compensate for the weakness created by the opening, potentially impacting the structural performance.



The TDBL enables fast and easy installation from one side using a cordless impact driver - meaning it can be used in previously inaccessible or hard-to-reach places.



A versatile fastening system – **TDBL**

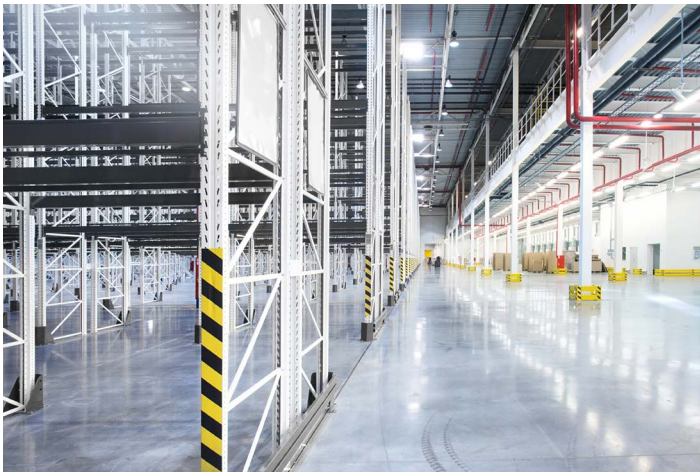
High rack construction



Modern Methods of Construction



Platform construction



Shelf construction



Steelwork



Lightweight construction





Easy

- Only one type of fastener
- Easy positioning
- Only needs access from one side

Secure

- Will not overdrive
- No unwinding

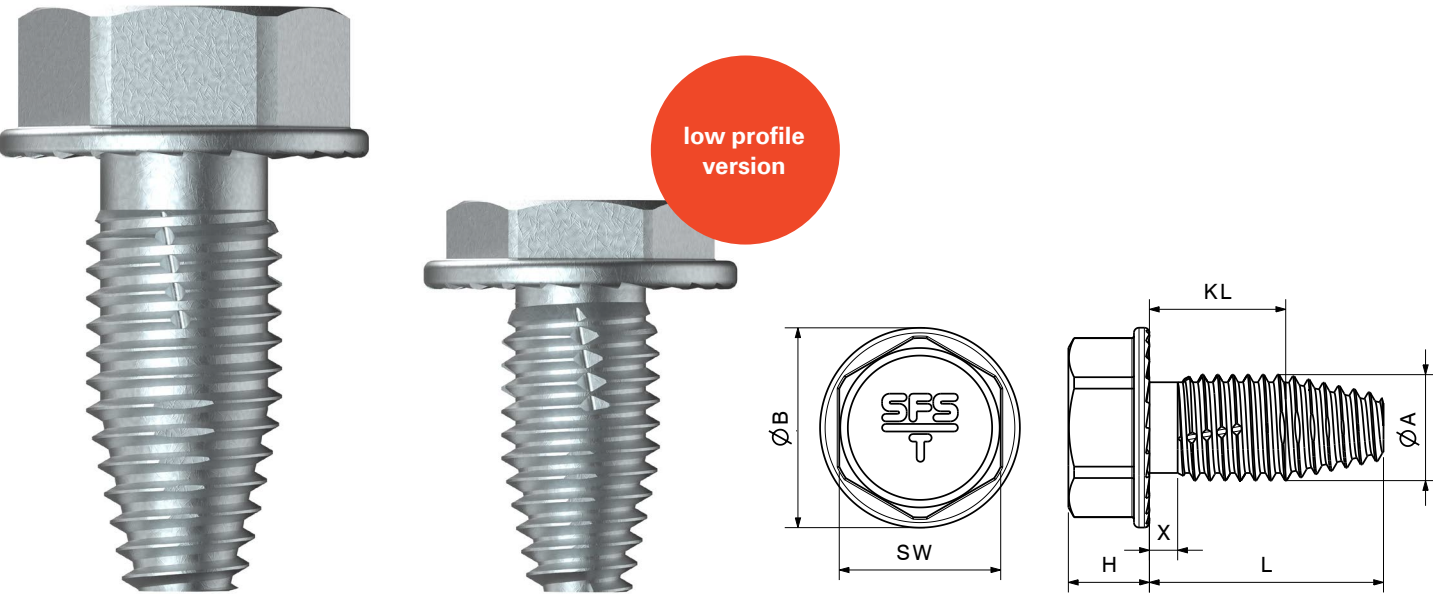
Fast

- Fast and user-friendly
- Supports one handed installation
- Self-tapping
- No need to add a nut

Product range

TDBL

Self-tapping fastener
for fastening in steel
Steel grades up to S355, S450 GD, HX460 LAD

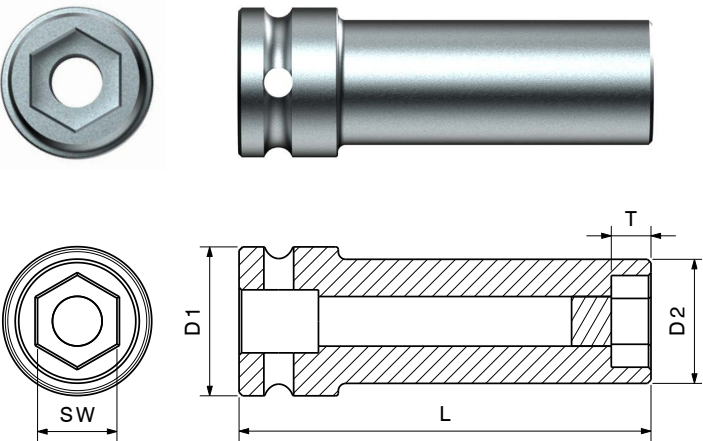


Product Code	Material number	KL [mm]	Ø A [mm]	L [mm]	X [mm]	Hexagon	SW [mm]	Ø B [mm]	H [mm]
nonut®-TDBL-T-8.6x16	1542214	9	8.6	16	2	✓	13	16	7
nonut®-TDBLF-T-F-8.6x16*	1541860	9	8.6	16	< 1	✓	13	16	4.7
nonut®-TDBL-T-10.6x23	1542223	13	10.6	23	3	✓	16	20	8
nonut®-TDBLF-T-10.6x23	1542229	13	10.6	23	< 1.5	✓	16	20	8
nonut®-TDBL-T-10.6x30	1542217	20	10.6	30	3	✓	16	20	8
nonut®-TDBL-T-10.6x50	1561761	40	10.6	50	3	✓	16	20	8
nonut®-TDBL-T-13.4x20	1542465	10	13.4	20	3	✓	16	20	8
nonut®-TDBLF-T-13.4x20	1542470	10	13.4	20	< 2	✓	16	20	8
nonut®-TDBLF-T-13.4x23	1589570	13	13.4	23	< 2	✓	16	20	8
nonut®-TDBL-T-13.4x30	1542212	20	13.4	30	3	✓	16	20	8

*Low profile

Accessories

Use of impact driver with magnet to securely hold the fastener
Supports installation with one hand



Setting tool

Impact driver
Maximum torque depending on use 150–500 Nm



Product Code	Material number	Drive	SW [mm]	L [mm]	T [mm]	Hexa-gon	D1 [mm]	D2 [mm]
E313	508029	¼" hex.	13	50	6	✓	–	20
E513	1512203	½" sq.	13	100	6	✓	30	22
E416	1389740	½" sq.	16	38	7	✓	30	24
E516	1524373	½" sq.	16	90	7	✓	30	22



SFS Group Fastening Technology Ltd.
Division Construction
153 Kirkstall Road
Leeds, LS4 2AT
uk.info@sfsintec.biz
www.sfsintec.co.uk